

PLEASE SIGN IN AT THE REGISTRATION DESK

WELCOME

NU-E CORP IS PLEASED TO WELCOME YOU
TO OUR OPEN HOUSE

MEET THE TEAM, LEARN MORE ABOUT THE
PROJECT, PROVIDE YOUR FEEDBACK AND
GET THE ANSWERS TO YOUR QUESTIONS.



THANK YOU FOR ATTENDING!

LETHBRIDGE ONE SOLAR POWER PROJECT

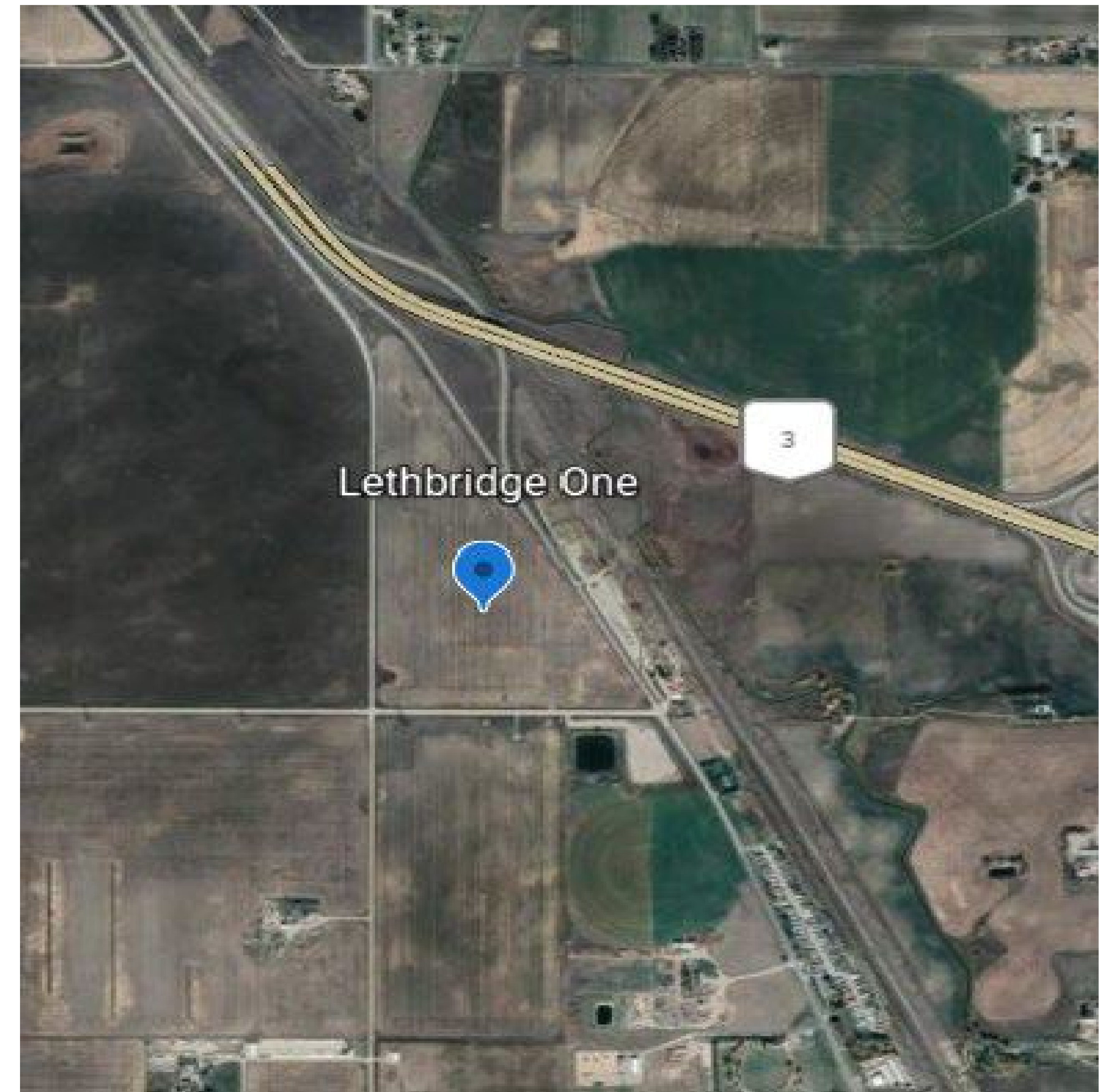


PROJECT DESCRIPTION

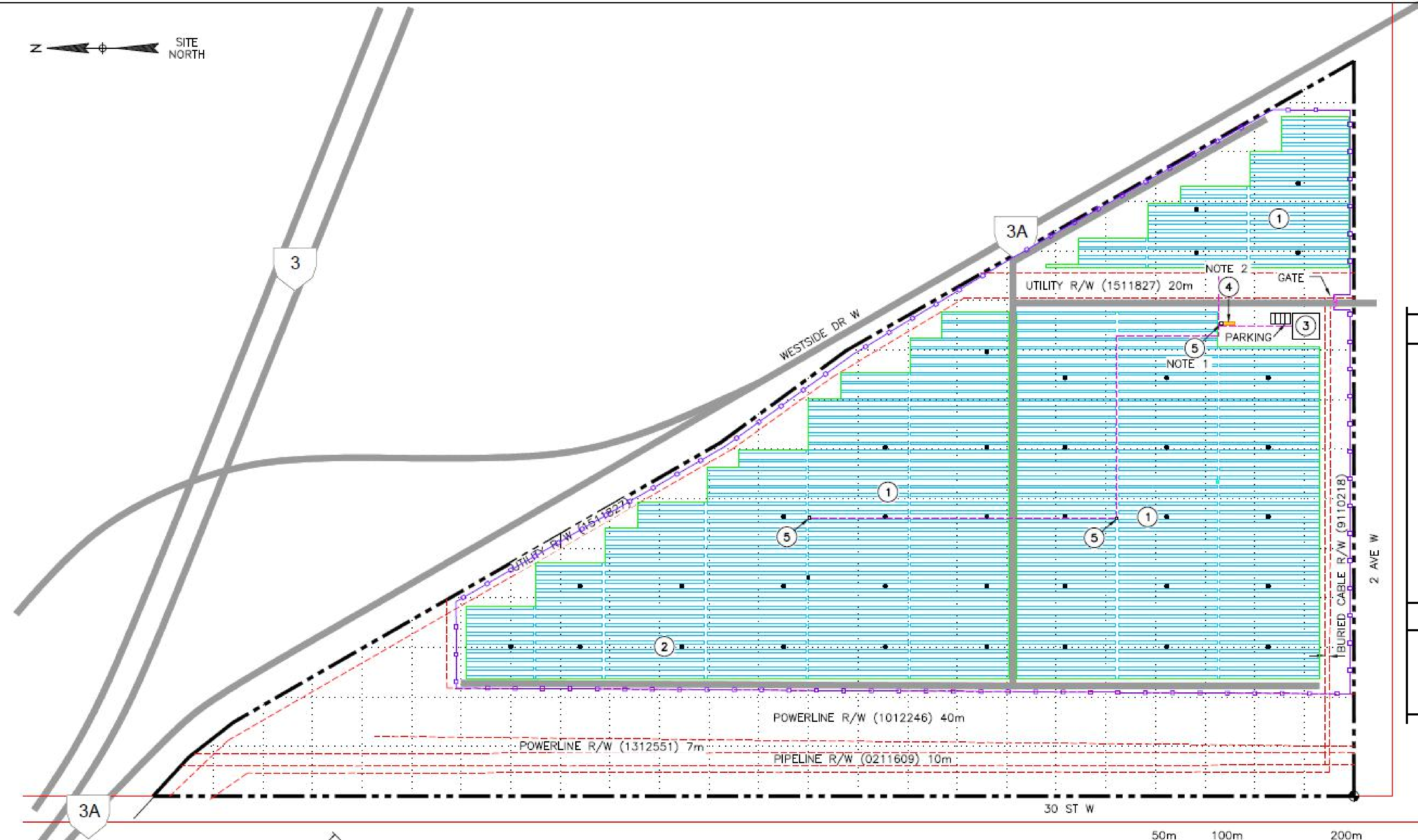
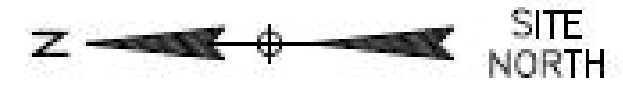
DEVELOPER: NU-E Corp
PROJECT NAME: Lethbridge One
PROJECT TYPE: Solar Power
HOST MUNICIPALITY: City of Lethbridge
LOCATION: 2910 Westside Drive W
SW 10-9-22-W4M

SCOPE: Solar photovoltaic panels, panel racking system, electrical inverters, internal access roads and other related electrical equipment.

INTERCONNECTION: The project will connect to the Lethbridge Electric Utility (LEU) from the 181S Chinook substation



Lethbridge One is to be located on approximately 80 acres of privately owned agricultural land, south of Highway 3, west of Westside Drive, north of 2nd Avenue West and east of 30th Street West

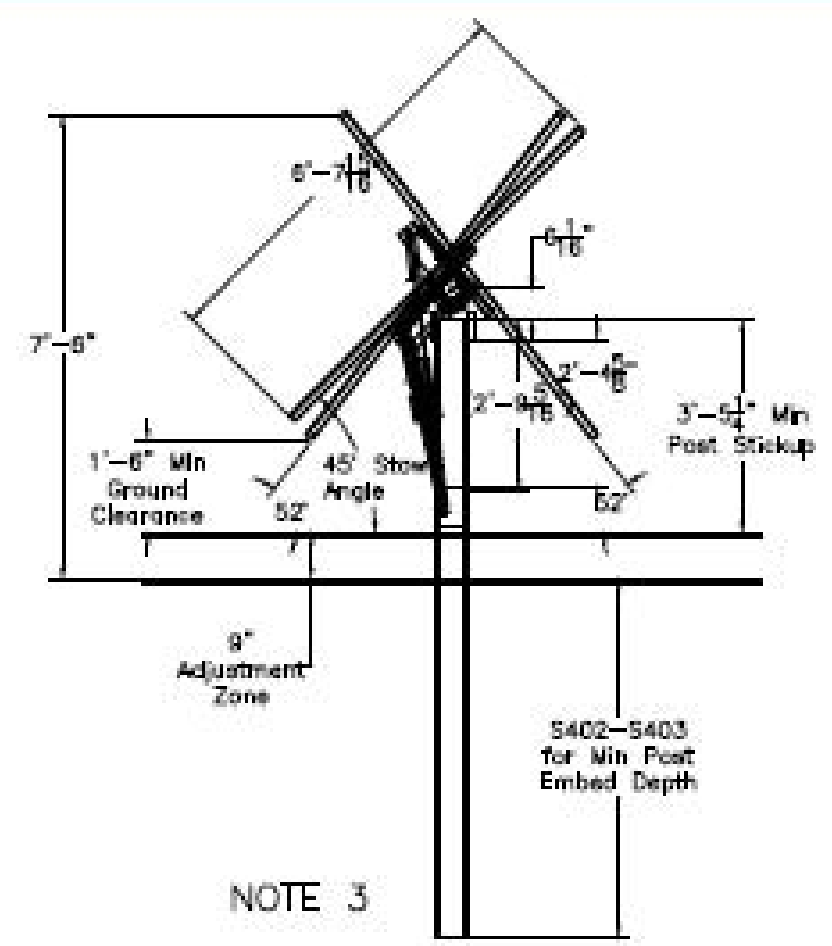


LEGEND

	MODULE TABLE
	ROAD
	NEW FENCE
	DEVELOPMENT AREA
	NEW DEVELOPMENT AREA
	SUBSTATION AREA
	OVERHEAD POSTS/LINE
	NEW EXCLUSION ZONE
	INTERCONNECTION LINE
	BURIED ELECTRICAL

TOTAL AREA DEVELOPMENT

TOTAL AREA:	297,568m ²
USED AREA:	181,188m ²
PARKING SPACES:	4



EQUIPMENT LIST	
ITEM#	DESCRIPTION
1	PV ARRAY
2	STRING INVERTER
3	OPERATIONS AND SCADA BUILDING
4	SUBSTATION
5	TRANSFORMER

PROJECT LAYOUT



ANTICIPATED PROJECT SCHEDULE

Lethbridge One Activity or Milestone	Target
Project Notification & Initial Consultation	January 2022
Public Open House in Lethbridge	February 2022
Submit Application to the AUC	October 2022
Submit Development Permit Application	November 2022
AUC Approval	February 2023
Development Permit Approval	March 2023
Begin Construction	March 2023
Energization Date	June 2023
Commercial Operations Date	July 2023

ABOUT US



Info@nu-ecorp.com

NU-E is a Canadian owned and operated solar development company.

NU-E recognizes support of the community, and the local landowners is the key to a successful project.

We are committed to use best efforts to minimize the impact on the community, environment and wildlife. Your feedback is important to us for consideration of project development, design and operation where applicable and practical.

We welcome invitations to support local initiatives and programs.

REGULATORY PROCESS



NU-E is currently engaged with various agencies of government. The Alberta electrical system is regulated by the Alberta Utilities Commission (AUC), an independent, quasi-judicial agency of the Province of Alberta. The AUC is responsible to ensure that the delivery of Alberta's utility service takes place in a manner that is fair, responsible and in the public interest. NU-E will submit application as per AUC Rule 007 to construct and operate a power plant.

Key regulatory stakeholders include:



Environmental field work is underway. Wildlife, vegetation and wetlands will be incorporated into the project layout.

Electrical grid connection studies are ongoing. NU-E, the Electric Utility (LEU) and AESO are working to advance grid connection studies and reports.

Noise Assessment to be conducted in accordance with the AUC requirements. Preliminary review finds the project will be within permissible dB levels having little to no adverse effects on surrounding residents.

WHAT'S NEXT?

Over the next several months, NU-E will be meeting with the community surrounding the Lethbridge One Solar Project providing information, answering questions and seek feedback.

On going development work:

- Complete Project layout design
- Conduct environmental assessments and wildlife studies
- Permitting activities including the AUC application
- Ongoing public consultation

For more information on how you can participate in the AUC approval process, please pick up an AUC brochure *Public Involvement in a Proposed Utility Development* at the registration desk.



Speak to one of our
representatives
today!

If you prefer to get in touch later,
our contact information is

Tel: 403-860-5685

Email: Info@nu-ecorp.com

THANK YOU FOR ATTENDING!

Please take a moment to fill out a comment card to provide your feedback on the project.



Pamela Pelletier

Tel: 403-860-5685

Email: Info@nu-ecorp.com