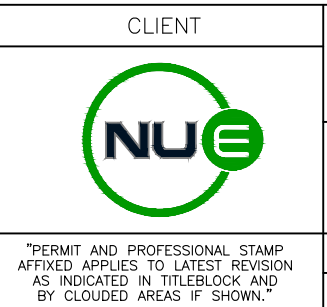


LEGEND	
	FACILITY ROAD
	NEW FENCE
	PROPERTY LINE
	SUBSTATION AREA
	SOLAR FARM DEVELOPED AREA
	EPHEMERAL WATERBODY
	TEMPORARY GRAMINOID MARSH
	PIPELINE R.O.W.
	WELL SITE AREA
	PROPERTY LINE, ROAD AND WELLHEAD SETBACK
	PUBLIC ROAD

GENERAL NOTES	
COORDINATES:	LSD SW/SE-36-007-22 W4M LETHBRIDGE COUNTY, ALBERTA
NOMINAL DC-POWER:	26.4 MW DC
NOMINAL AC-POWER:	22.0 MW AC
MODULE:	TRINA - 660W
INVERTER:	SUNGROW SG350HX
CONSTRUCTION	
TABLE:	SINGLE AXIS TRACKING SYSTEM
AXIS/TILT:	EAST/WEST/-60° TO 60°
DIST. BETWEEN MODULES ON A TABLE:	15mm
DIST. BETWEEN TABLES IN A ROW:	6m CENTER
DIST. BETWEEN ROW IN A FIELD:	0.5m / 2.5m
ELECTRICAL CONCEPT	
MAXIMUM SYSTEM VOLTAGE DC:	800V
TOTAL NUMBER OF MODULES:	32928
STRING LENGTH:	28 MODULES
STRING PER INVERTER:	8-9
DC/AC RATIO TOTAL:	1.2
TOTAL AREA DEVELOPMENT	
TOTAL AREA:	0.351km ²
USED AREA:	0.351km ²
FENCE LENGTH:	2.028km
ROAD LENGTH:	2.435km

DRAWING #	REFERENCE DRAWING TITLE	REV.	DATE	REVISION DESCRIPTION	PRJ#	DWN	CHKD	QC	ENG
		A	2023.10.19	ISSUED FOR REVIEW	227202	BLM	NGZ		NGZ

ENGINEER STAMP / PERMIT



BLUESTAR ENGINEERING LTD.

NU-E LETHBRIDGE 2
LSD: SW/SE-36-007-22 W4M
SOLAR FACILITY
APPLICATION PLOT PLAN

SCALE	1:2000	SIZE	D	PROJ.No.	227201
DWG.No.	227201-DG-ELC-1000-02	REV	A		